



Zenith Condos #206

901 2nd Street S

Minneapolis, MN 55415

View Online



Zenith Condominiums.

This beautiful condo is located directly across from Guthrie & Gold Medal Park and offers the perfect balance of downtown living & the quiet, riverfront community of Mill District. Elegant, yet functional, this condo features floor-to-ceiling windows, a private balcony with gas grill, heated underground parking, and optional access to gym and pool with hot tub. The building features a beautifully designed lobby, private courtyard, high-speed garage doors, secure package room, and a brand new security system with an easy-to-use mobile app. Walk to the city's most coveted amenities: Stone Arch Bridge, Guthrie, Mill City Farmer's Market, biking/walking trails, Vikings Stadium, restaurants and bars, Trader Joe's (1 block), and Light Rail (2 blocks).



Property Details

Living Room: 24 x 12
 Kitchen: 14 x 9
 Bedroom: 11 x 11
 Balcony 12 x 6

Year Built: 2008
 Parking Stall: #261 (lvl P2)
 Taxes (2023) \$3,988

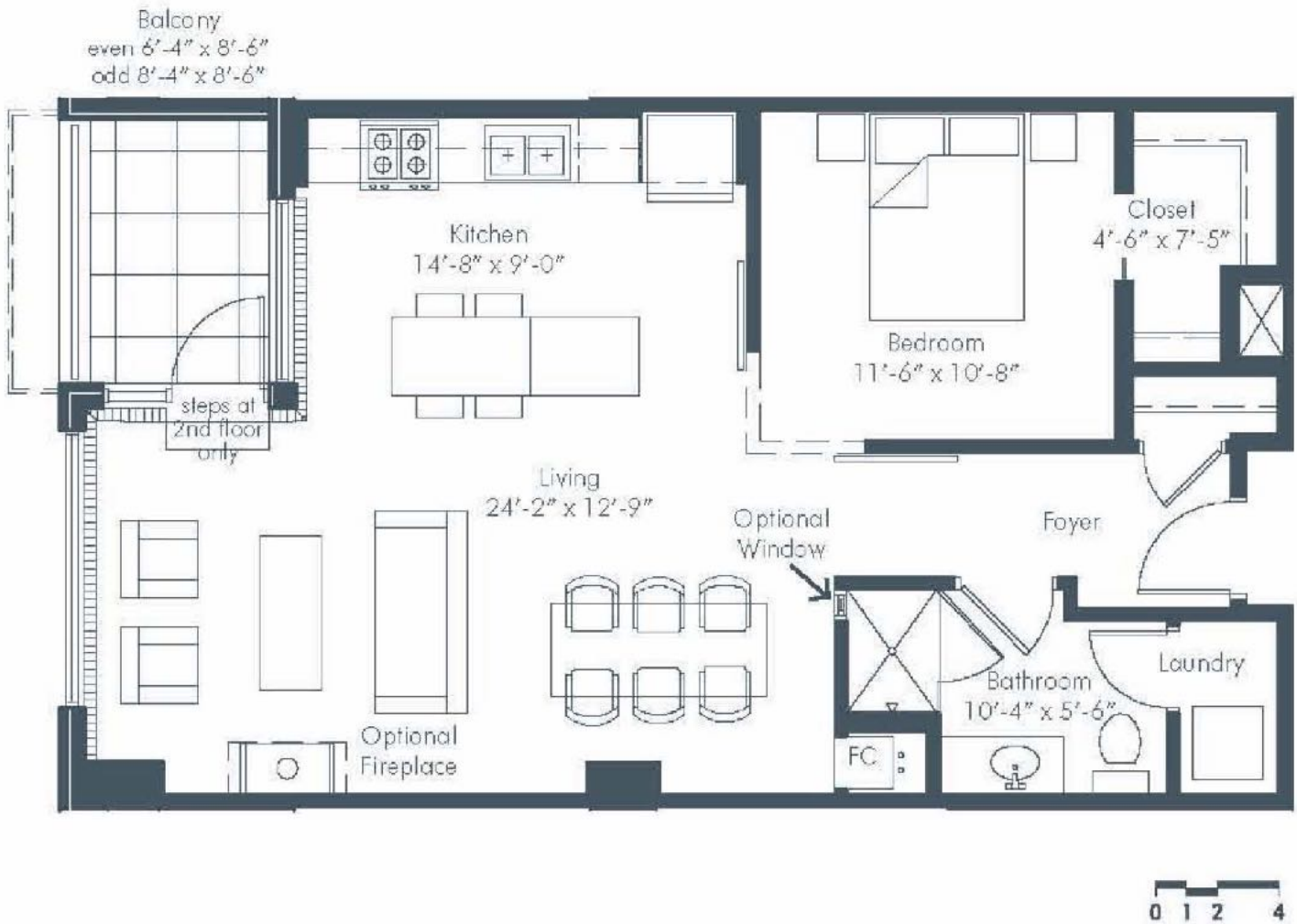
1 bed | 1 bath | 1 stall | 775 sf

HOA Dues: \$551/mo
 Dues Include: AC, Building Exterior, Cable TV, Gas, Hazard Insurance, Heating, Internet, Lawn Care, Outside Maintenance, Parking, Professional Mgmt, Sanitation, Shared Amenities, Snow Removal, & Water/Sewer





Floors 2-7 • 1 Bedroom • 775 Interior SF • 55/70 Exterior SF



February 12, 2007

Plans, materials and specifications, dimensions and equipment are based on availability and are subject to change without notice. Architectural, structural, mechanical and other changes may be made as deemed necessary by the developer, builder, architect or as required by law. Images are intended for illustrative purposes only.

Marketed by S.R. Hoffman & Associates, Ltd.



About the Building

Zenith Condominiums is Inspired Riverfront Living. Located in the Historic Mill District – just steps from the riverfront and blocks from the heart of downtown Minneapolis. A part of trendy Washington Avenue and directly across from the city's new Gold Medal Park, the Guthrie Theater and surrounding an elegant interior courtyard, Zenith shares this premier location with Aloft Minneapolis - a new version of Starwood's W Hotel brand. A variety of restaurants, shops, river trails and the twin cities light rail service are just steps from the front door.

Shared Amenities

- Outdoor Patio
- Exercise Room (hotel)
- Pool (hotel)
- Hot Tub (hotel)
- Heated Underground Parking
- Guest Parking



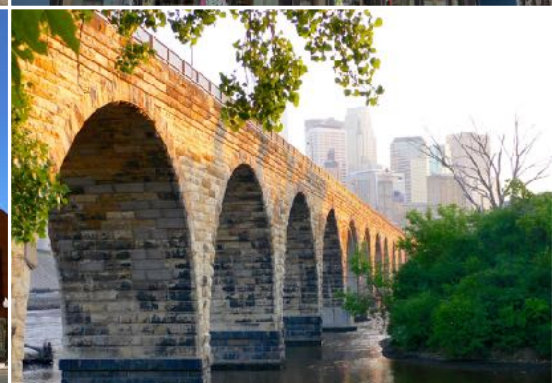


About the Neighborhood

Downtown Minneapolis' Historic Mill District is the historical and cultural center of Minneapolis. Its rich history and major cultural amenities make it THE most desirable residential downtown neighborhood. Located on the West Bank of the Mississippi River, the Mill District was the center of the flour and saw milling industry in Minneapolis. This historic area is now home to the award-winning Mill City Museum, the internationally acclaimed Guthrie Theater, Mill City Farmer's Market, and MacPhail Center for Music.

Area Highlights

- Guthrie Theater
- Mill City Museum
- Stone Arch Bridge
- Mill City Farmer's Market
- Gold Medal Park
- MacPhail Center for Music
- Open Book Literacy Center



Showing Instructions: Zenith Condos #206

Garage Level P2 (-2 in elevator)

- Assigned Parking Stall. - #261

1st Floor

- Lobby
- Outdoor Patio
- Mail Room

Trash Chutes are on every level (behind elevators)

Call or text the listing agent below with questions



Scott Parkin

REALTOR®

(612) 310-8247 | Scott@VerveRealty.com 

verve
REALTY.

All measurements are approximations of the actual size of the home. Verve Realty does not guarantee accuracy of square footage or other information regarding conditions or features provided by seller or obtained from public records or other sources. Buyer is advised to verify accuracy of all information through personal inspection & with appropriate professionals. Copyright © 2021 Verve Realty. All rights reserved.